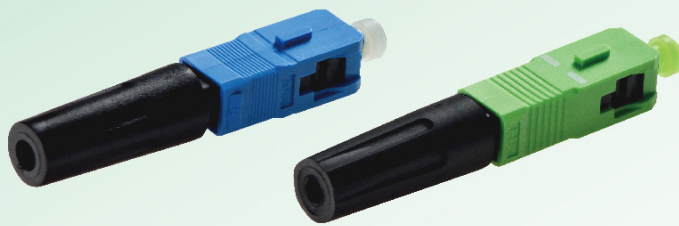


Field Assembly Connector is a very convenient optical fiber connector which can be field assembled and installed quickly, it is the best choice for drop cable termination. There are two types, they are Mechanical Field Assembly Connector and Fusion Splice Field Assembly Connector.

It has been widely used in the world with features such as rapid installation, time saving, compatible with standard SC and FC connectors/adaptors, and it can raise the efficiency of FTTH service provisioning.



## ● Features

- 1 Can be assembled on fiber or cable sheath
- 2 Easy assembly, no special tools required
- 3 The connection can be verified easily after assembly
- 4 Pre-installed fiber, pre-polished ferrule surface

## ● Application

- 1 Fiber Outlets
- 2 Fiber Termination Box
- 3 Fiber DP/NAP Box

## ● Classification

No.	Product type	Adaptor type	UPC/APC
1	Mechanical Field Assembly Connector	SC	UPC
		FC	APC
2	Fusion Splice Field Assembly Connector	SC	UPC
			APC

## ● Structure

### Mechanical Field Assembly Connector



#### Features

- 1 Re-assembly is available
- 2 Easy assembly, average assembly time ≤ 60s, one time success rate reaches 98%
- 3 Applicable cable: 0.9mm cable (additional Φ3.0mm cable sheath shall be installed) Φ2.0 or Φ3.0mm round cable, 2.0x3.0mm cable

### Fusion Splice Field Assembly Connector



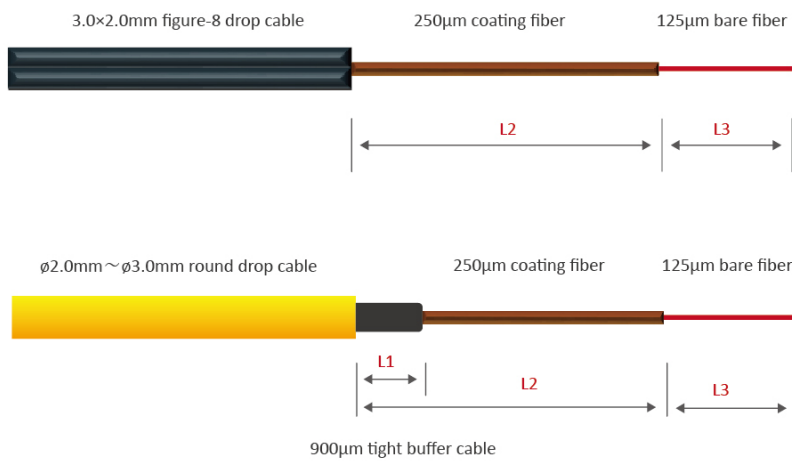
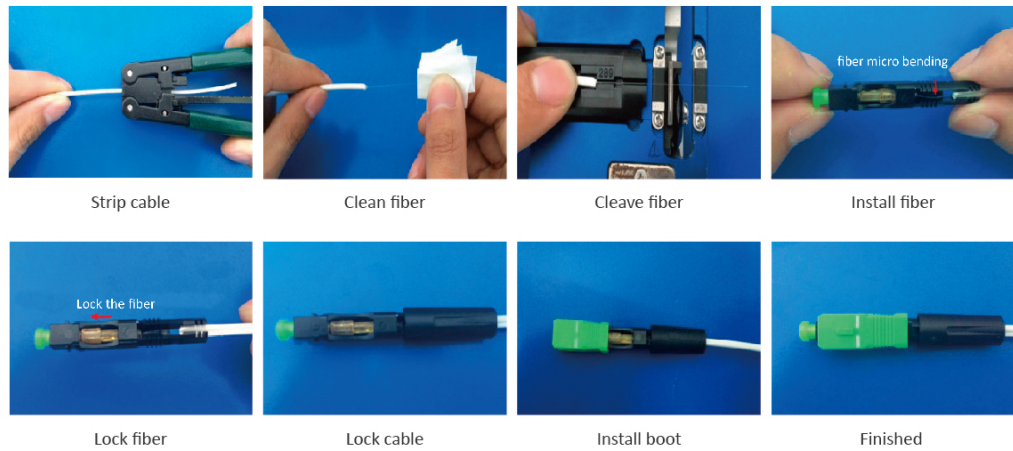
#### Features

- 1 One time usage, cannot be re-assembled
- 2 Stable optical performance, long life cycle, low maintenance cost
- 3 Applicable cable: Φ2.0 or Φ3.0mm round cable, 2.0x3.0mm cable

## Specifications

Item	Specifications
Connector type	UPC or APC
Fiber diameter (μm)	250 or 900
Insertion loss (dB)	Maximum ≤0.50; typical ≤0.3
Return loss (dB)	UPC≥50; APC≥55
Tensile load (N)	≥20
Working temperature (°C)	-40 ~ +70

## Assembly Procedure (Mechanical Field Assembly Connector)



**NOTE:** L1: 900μm tight buffer cable      L2: 250μm coating fiber      L3: 125μm bare fiber